



*EasyEarthworks*TM

Earthworks measurement made simple

EasyEarthworks™

Now in its third edition, EasyEarthworks™ is the simple answer for anybody who spends even a small amount of their time calculating cut & fill quantities. Designed specifically to address time, cost and accuracy requirements, EasyEarthworks™ reduces to a few minutes what traditionally can take several days to accomplish - with stunning accuracy. If you want to take the stress off AND write more profit to your bottom line, EasyEarthworks™ is the answer you've been looking for.

Enterprise Efficiency

So you want to measure drawings for cut & fill quantities. You could take the CAD route and try the built-in tools in established CAD systems, but these are designed to create drawings, not measure them. You could try a file viewer and attempt the same, but again it's like trying to employ a jack-of-all-trades when you actually need a specialist. You could print your drawings and try to measure them on a digitiser based system, but these are slow and you need expensive add-on hardware, not to mention the cost of printing your drawings. To do the job accurately, on time and on budget, you need a tool specifically designed for the task, quick to learn within an easy to understand package that does it all on-screen without the print overheads.

When you're measuring groundworks you need EasyEarthworks™.

Building on the designs of almost two decades in the business of drawing measurement, EasyEarthworks™ delivers the ease of use, speed and accuracy it's always been famed for. With a common design shared with its sister product OnSight™, users now have a suite of systems able to handle all types of drawing information from photo's, through CAD, PDF and even scanned files.

So what does it do?

EasyEarthworks™ delivers real and immediate commercial benefits to all users undertaking cut & fill calculations for BQ's, estimates, tenders, feasibility studies and final accounts. Its easy to use interface belies the underlying sophistication of the system. Even users picking up the system for the first time find it easy to use, delivering supremely accurate results with outstanding time savings right from the word go.



Put simply, it crunches the numbers, removes stress, saves time and delivers the accuracy you need for your groundworks cut & fill.

But more than this, EasyEarthworks™ inherent accuracy means greater reductions in calculation errors, with the knock-on effect of more confident and competitive tendering bids. Across all stages of the bid, from early feasibility right through to final account, EasyEarthworks™ delivers - and then it lets you go home on time.

Working to your style

Rather than dictate the way you work, EasyEarthworks™ offers every user the latitude to approach projects in their own way. From setting up a project, you are taken through the various steps required to get results in an easy to understand progressive manner. Information can be entered in any order but most users follow the traditional approach: Extract existing ground levels from the drawings, then input your object areas with their finished levels and construction thicknesses and finally press the calculate button! It is that simple.

And there's plenty of scope in what sort of levels are handled; spot levels, contours, string



KEY FEATURES

- Windows XP, Vista, 7, 8 & 10 supported.
- Developed on Microsoft languages for protected mode run time safety.
- Multi layered with full colour control at object as well as layer level.
- CAD system independent, runs without the need for CAD.
- Handles CAD (DWG, DXF, DWF) and scanned/picture files (BMP, TIFF, JPG etc).
- Measure from PDF's (raster and vector formats).
- Import files from OnSight™ for continued productivity.
- Object repositioning.
- Clone single and multiple objects.
- Clone complete layers.
- Auto measure (on file load) key area objects.
- Edit and adjust object tools.
- Variable transparency tool.
- Trim objects using cutting tools.
- Offset/insets tool (for working space, trenches, pile mats etc).
- Methodology rules for CESMM, SMM and NRM.
- Customisable for other depth category ruling.
- Earthworks balance on demand (cut = fill).
- Graphical cut/fill shading.
- Plan and True area results as standard.
- Dynamic drag & drop.

lines they're all handled easily and efficiently to build a virtual model. What's more, our OCR technology allows us, in many cases, to read the levels off the drawing surface by simply dragging a marquee box around the ground level. With little typing it's a very efficient way of grabbing levels off your 2D drawings even when they are text vectorised PDF's (which the majority of drawings tend to be).

Of course at this stage multiple drawing files may have been presented, but whatever their format, EasyEarthworks™ handles them with ease, overlaying them with each other or even tiling them side-by-side for an easy to handle view of the project. Even when revised drawings come in, it's an easy step to insert the new plans and remove the old, even differences in scale between drawings are handled with ease and without stress. From then on, it's simply a matter of requesting the results, with EasyEarthworks™ ripping through the calculations for you, removing the stress and strain, allowing you to progress with ease and certainty. It couldn't be simpler.

Nested layers

Putting data in and getting answers out is, however, only half the battle when it comes to big site measures.

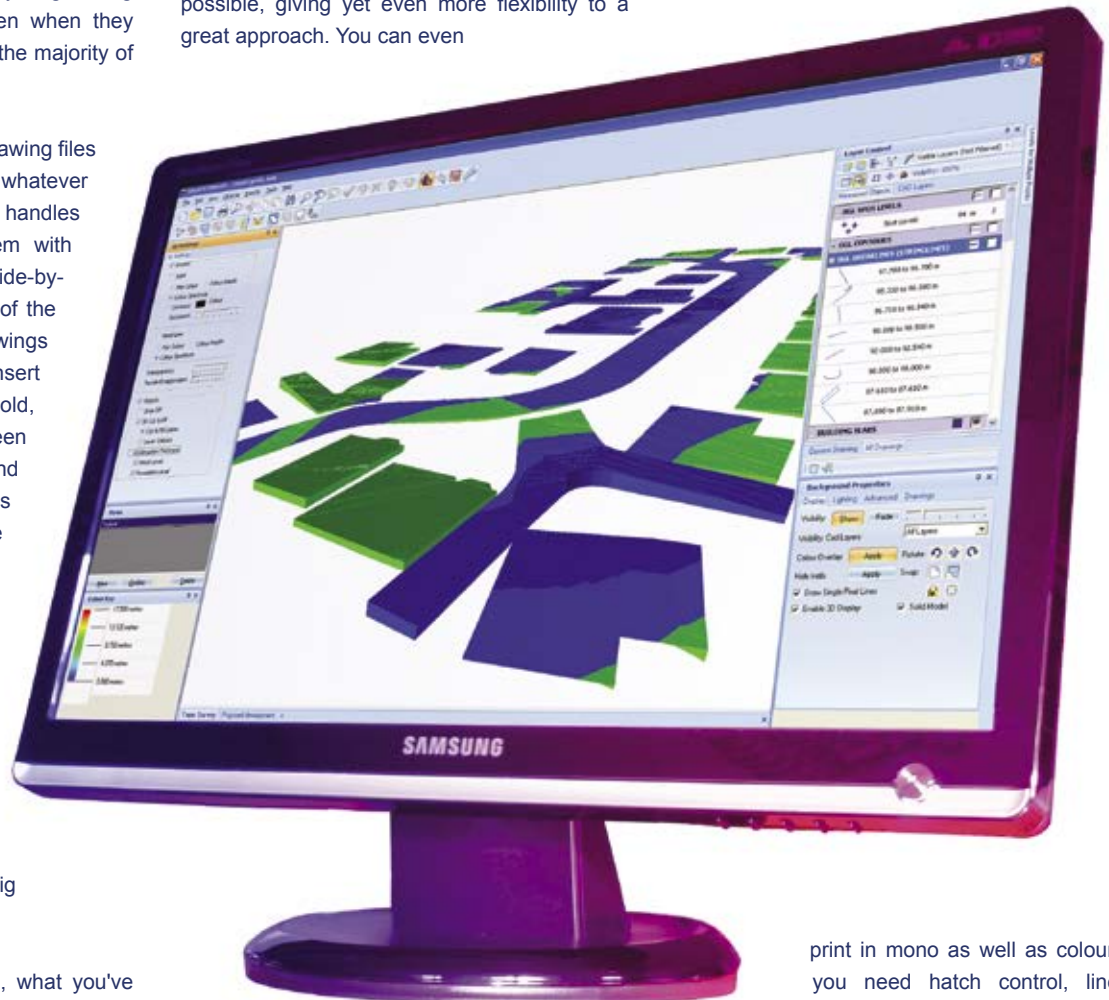
Keeping track of where you are, what you've done and keeping things in a logical order is a paramount requirement for a successful project measure. And, of course, EasyEarthworks™ scores here too. Like our other measurement solutions, EasyEarthworks™ continues to make use of the well-adopted approach of measuring in layers. But even this technique has been re-engineered, allowing ground level data and

contours to be easily separated from all of the measured work objects.

Keeping the screen nice and clean is a key to the system's success. Unlimited layers, and even nested layers (layers within layers), are possible, giving yet even more flexibility to a great approach. You can even

Making the most of print

So you've measured your project - now you need a distribution route. As standard, EasyEarthworks™ can export to Excel™ at the click of a button - but you need more. You need to



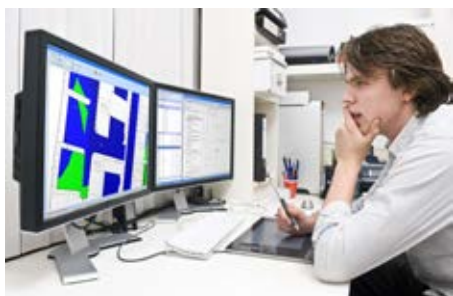
move and clone objects from layer to layer as well as drawing to drawing! Each and every layer also has its own colour and line attributes, giving the user ultra fine control over both screen presentation and final print output.

print in mono as well as colour, you need hatch control, line control and total colour control, right down to object level in a wide range of formats including A4, A3 and even plotter (under development) and EasyEarthworks™ delivers it all. You even get a 3D rendering of the site so you can see how everything meshes together (or, more importantly, when it doesn't). Finding out you

- Visibility controls at layer, object and image file levels.
- Object move layer control.
- Full 3D visualisation module as standard.
- Layer within layer (nested layers).
- Out of scale adjustment (X & Y).
- Dynamic scale changing even part way through projects.
- Multiple drawings per project (any supported format).
- Revised drawing replacement.
- Stacked and tiled drawings supported as standard.
- Predictive annotation.
- Full undo editing.
- OCR of levels for speedy input.
- Axis cross hairs for alignment when measuring (rotatable).
- Zoom, pan, rotate and synchronise drawings.
- Video driven audio-visual Help system.
- Toolbar button resizing for better screen clarity.
- Layer style tools for faster consistent project setup.
- HotLink™ enabled for single click transfer of results to other applications.
- Multiple format printing (mono and colour).
- Full file export to Excel™.
- Export to Microsoft® Excel™ as standard.
- On-going development and support path.

EasyEarthworks™

"With its incredibly easy to understand screen design, confidence in the system was immediately high...ultimately our initial confidence was proven well founded!"



have Mt.Everest in the middle of your site is always better before you submit your figures, and it's more often than not an error on the drawings that the system helps you catch! Result.

Measurement Methodologies

In its simplest mode, EasyEarthworks™ will effortlessly produce bulk cut & fill results, listing figures for each designated object in the Project (Block 1, Car Park etc), but for those users who need their figures categorised by depth, it's a simple matter of enlisting the help of the system's libraries. Methodology rules for SMM7, CESMM2, CESMM3 and NRM2 are simply a button click away and other rule sets can be added. Users can even set their own depth category values for even more precise results. You're always in total control with EasyEarthworks™.

Separate drawing for 'ground' and 'finished' - it's an old dilemma

And one that continues to foil many 'systems'. Not so with EasyEarthworks™. You can load as many drawings as you need into a single project, and what's more, the project file is self-contained, with drawings and data folded into a single file wrapper - invaluable when you need to send a project file to another EasyEarthworks™ user.

After sales support

Of course, when you have purchased and installed EasyEarthworks™, the relationship doesn't stop there. Software moves on, as do techniques and Windows operating systems, so we are constantly refining and improving the system to ensure you have the best solutions to keep you ahead of the game.

Our online knowledge base gives users access to support bulletins and, of course, during normal working hours, our development team are ready to field calls. "But what of updates?" you ask. These are automatically detected by the system whilst in use and the user prompted to initiate the download. Installation is totally

automatic, ensuring our client base is as up-to-date as we can make them.

Help & Support

As with all Visual Precision systems, full online help is available throughout the program, but even then it's special. Concentrating on the central theme of speed and ease of use, Visual Precision have engineered the Help system in full multimedia glory. No longer do users need to wade through endless screens of mind-numbing text, now they simply watch and listen as the multimedia system delivers full real-time video examples of how the system is used. With voice-over narrative guidance and explanations, the multimedia Help system acts as both a reference guide and training tutorial, and engages the user in quick, easy to understand examples. Online Help has never been this easy.

Training and Implementation

Of course, training and implementation hasn't been overlooked either, and is generally carried out on-site in the client's own offices, minimising disruption to staff and avoiding multiple hotel bills! The software is configured and users get to familiarise themselves with their new system, boosting further their confidence in their own installation. Training is structured based upon the size of the group and is delivered to make sure that a thorough understanding of the system is gained, rather than just to get a meaningless trophy certificate. On-going support is always available as well, including our remote link software that allows support engineers to actually show end users what to do by remote control link-up. Whenever you need it, help is at hand, guiding you through new aspects of the system and making sure you meet those important deadlines.

So the next time you want to build a winning tender based on accurate quantities, think inside the box, think EasyEarthworks™.

There's no prize for second place.

AT A GLANCE

USERS

Designed specifically for QS's and Estimators. Structured to work as a measurement tool. Faster, more flexible and vastly more efficient than using CAD systems.

OPERATING SYSTEMS

Windows XP, Vista, 7, 8 & 10

SUPPORTED FORMATS

A wide range of CAD and picture file formats are handled by the system. DWG · DXF · DWF · JPG · BMP · TIFF · PDF. More formats constantly under development

MODES

Cut, fill and topsoil strip volumes, cut areas, fill areas, plan areas, true areas and categorisation splits under SMM, CESMM, NRM and USER rules as required (all editable).

DISPLAY

Personalised display options (for each user), full on-screen graphics, total colour and line thickness control, layer management, multi layers, tiered layers, visibility, hatching and translucency control.

SCREENS AND ADD-ONS

Twin screen support as standard. Touch screens and 3D mouse controllers available for extra productivity boosts

OUTPUT

Export to Excel™
Mono & colour output to printer

TRAINING

Specialist dedicated training

System requirements:

Windows XP or later. See website for current hardware specification (www.visualprecision.co.uk)

EasyEarthworks, OnSight and HotLink are registered trade marks or trade marks of Visual Precision Limited.

Microsoft and Excel™ are registered trademarks and trademarks of Microsoft Inc.

© Visual Precision Limited 2021. All rights reserved

E&OE Specifications may change without notice.

Visual Precision

Visual Precision Limited
2 Sycamore Tree, Elmhurst Business Park
Park Lane, Elmhurst, Staffordshire WS13 8EX
T: +44 (0)1543 262222 F: (no longer in use)
E: sales@visualprecision.co.uk
W: <http://www.visualprecision.co.uk>

Your EasyEarthworks™ reseller: