



# *QS*Express™

*The engine you've been waiting for*

# QSExpress™

One of the flagship systems of the QSToolbox™ range of software, QSExpress™ is the reply to the industry's requests for a better Bill Production, pre and post contract system for the Quantity Surveyor, Engineer and Contractor.

Designed specifically to address the time and accuracy requirements of professionals requiring to produce bills and final accounts within tight fee constraints, QSExpress™ delivers the real and immediate commercial benefits demanded in today's competitive industry.



## A Better Wheel

All systems boast '32 bit 'built for Windows' 'fast' 'easy to use' but these are what we know users come to expect as standard of Visual Precision software so we don't make these benefits headline news.

QSExpress™ is of course easy to use, we've made sure of it, but there's more to QSExpress™ than this. It's the design of the system that stands out. Throughout the design process we looked very hard at what users really needed and identified the key areas where speed and efficiency are key attributes for a solution to succeed, both perceptually and economically. This shows through in the end product and clients easily identify with the design skills of the development team, recognising sub-consciously the superior nature of the system.

## Library handling

The handling of libraries is a key issue to any system, that's why QSExpress™ has a strong and well thought out library maintenance routine. Adding new descriptions to projects is simplicity itself with the system even handling the coding if you wish, totally automatically. Of course you can take full control if you desire and for those with security clearance, rogues can even be injected into the system master library for use on future projects.

In use, QSExpress™ makes searching for descriptions effortless as well. Its 'seek & search' feature will have you streaking through the library virtually instantly to find those ever-elusive descriptions – a time consuming task on other systems lacking our technology. Once tracked down, even multiple 'finds' are dealt with logically to give you the fastest possible take-off speed (after all, it is what you spend most of the time doing when you're creating bills).

Building on this, QSExpress™ through the use of advanced techniques will also allow the re-use of many standard libraries. Even if you have an existing non-standard library we can assist with its migration ensuring all your previous hard work is not lost when you move up to your next system. And even if we haven't already built an import routine for your old legacy system, as authors of the program we can quickly and effortlessly make the necessary changes to bring your old library into the fold. Whatever system you're currently using you can move up to QSExpress™ without drama.

Based around the functionality which has been well established in Visual Precision's other taking-off systems, QSExpress™ adheres strongly to traditional taking-off practices and techniques to offer unparalleled levels of functionality and useability. With its internationally recognised vertical style take-off screen, training in the use of this key area is minimal, which virtually guarantees the commercial success of pre-contract projects.

All the key features are available including timesing, anding-on, annotations and multi-nesting sidecasts as well as a few new ones like Paste Link - the ability to copy and paste any figure in the take-off and have a dynamic link maintained. You can also copy groups of dimensions from one sheet to paste them into another. The system's versatility is second to none.

## All change

But putting information in is only half the story. Once it's in, there are always the modifications and changes to take care of. That's why QSExpress™ also 'majors' in the edit stakes. With its fully dynamic take-off entry feature, questionable entries need only to be entered into the system once. Every other entry is then based on the first input so when confirmation on the measurement is made, one single edit can remodel the whole of a bill in a single sweep. Just imagine how flexible a system like that really is - by changing the length of say, the first centreline measurement, the whole of the project can be recalculated. This is truly putting you in control of the project.

Dare we say, it's empowerment. However, that's only part of what QSExpress™ achieves. It handles descriptions and bill edits just as easily. In bill view or abstract view mode, descriptions can be changed 'on the fly' and edited in place, and it's a cinch to make major description and specification changes to the bill in a few seconds. All of this ability to change bills is of course tempered with several layers of security for the Enterprise edition to ensure only project leaders and approved personnel can make substantial edits to the bills.

## Wide area working

In the business world there have also been changing views on both work times and work places. Outsourcing has become ever popular amongst construction professionals and it is now the norm for businesses to consider the

## KEY FEATURES

- Single user and real-time simultaneous multi user SQL Enterprise editions
- Remote user collaboration support
- Import legacy libraries
- Traditional take-off screens
- AutoCheck™ dimsheets management mitigating mistakes
- Quantity rounding control
- Multiple libraries available
- Create own libraries
- Group multiplier facility (timesing of major groups ie 25x house type)
- Priced library module
- Multi currency
- Imperial & metric modes as standard
- Library FastSearch
- Traditional timesing, annotation, sidecasting, anding-on and paste link
- Fully dynamic sidecasting - change once changes all
- Real time document editing
- Single rate and rate build-up pricing
- Project archive function as standard
- Integrated spellchecker

use of external collaborators for larger projects as well as home working for their full-time staff. None of this has been overlooked in the design of QSEExpress™ and using the Collaborate module, remote workers with laptops and stand-alone computers can work autonomously on projects without

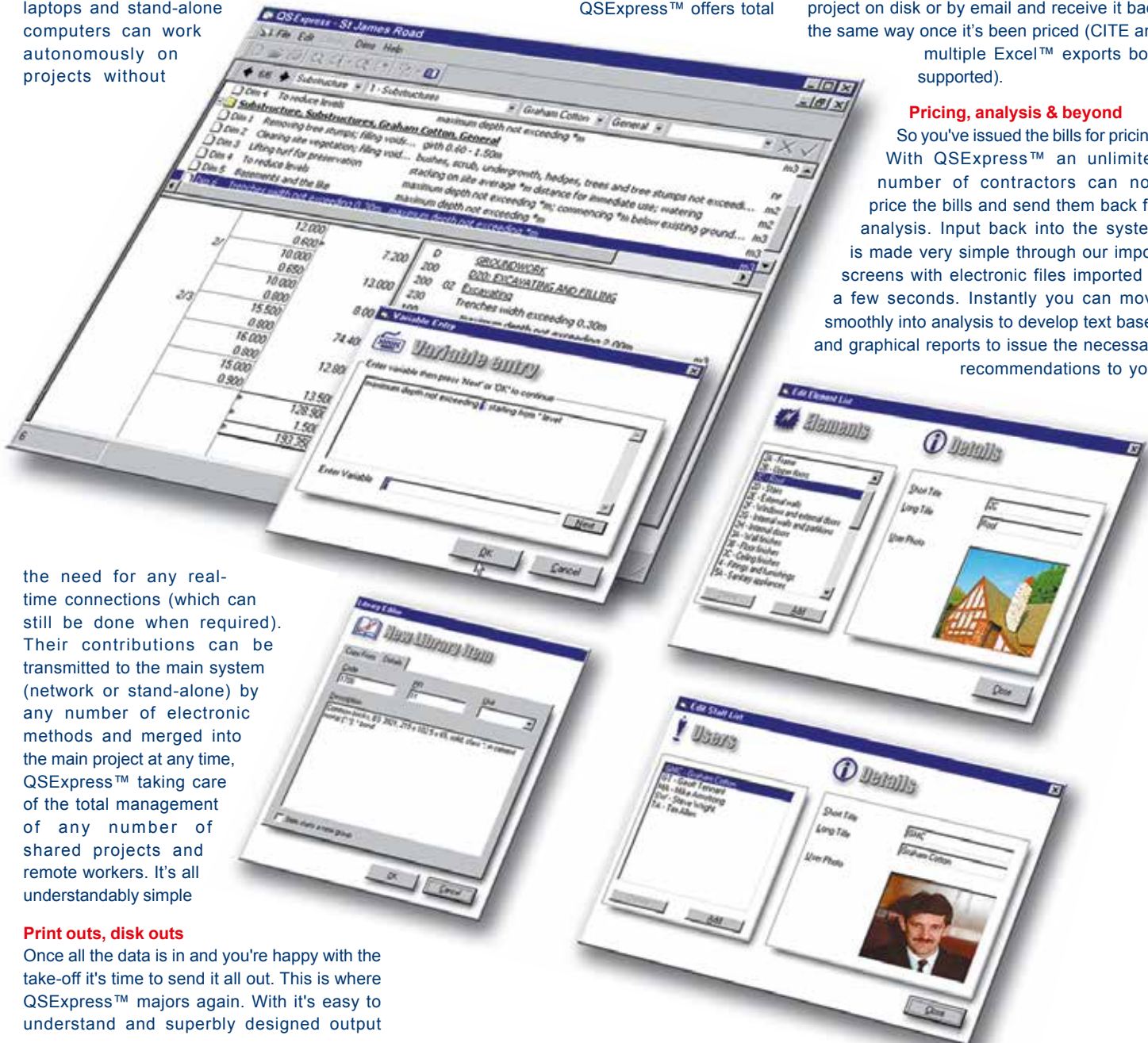
control over the bill formats as well as allowing bills in different sort orders and formats to be issued on the same project to give you and your clients the project structure you want. And you can export to file too, so you can issue the project on disk or by email and receive it back the same way once it's been priced (CITE and multiple Excel™ exports both supported).

QSEExpress™ offers total

control over the bill formats as well as allowing bills in different sort orders and formats to be issued on the same project to give you and your clients the project structure you want. And you can export to file too, so you can issue the project on disk or by email and receive it back the same way once it's been priced (CITE and multiple Excel™ exports both supported).

### Pricing, analysis & beyond

So you've issued the bills for pricing. With QSEExpress™ an unlimited number of contractors can now price the bills and send them back for analysis. Input back into the system is made very simple through our import screens with electronic files imported in a few seconds. Instantly you can move smoothly into analysis to develop text based and graphical reports to issue the necessary recommendations to your



the need for any real-time connections (which can still be done when required). Their contributions can be transmitted to the main system (network or stand-alone) by any number of electronic methods and merged into the main project at any time, QSEExpress™ taking care of the total management of any number of shared projects and remote workers. It's all understandably simple

### Print outs, disk outs

Once all the data is in and you're happy with the take-off it's time to send it all out. This is where QSEExpress™ majors again. With it's easy to understand and superbly designed output

- None destructive omissions (take out / put back)
- Unlimited contractors to any project
- Export bills to CITE format
- Export full bills to Excel™
- Building and Engineering bill layouts
- Export valuation format bills to Excel™
- Multiple analysis methods (top down, bottom up, x-analysis)
- Compare contractors rates
- Cost Control
- Professional print management
- Drill down WYSIWYG BQ's
- Professional presentation
- Quality manual
- Total after sales support
- Automatic upgrades
- Function control multi-level security
- Multi media Help/Tutorials as standard
- World Wide Web support with on-going development
- Full integration with OnSight™ and EasyEarthworks™

# QSExpress™

*"Bill production as a profit centre is a significant factor to our commercial success - implementing the right system in terms of speed, stability and agility was crucial and QSExpress™ didn't disappoint"*

clients and other departments. Then it's on to post contract control where any number of your pre-contract contractors can be carried forward into post contract control. Rates can be single 'all-in' or built up, giving those users who need it, especially contractors, the ability to analytically structure their costs by the more traditional labour, material, plant type approaches. You can even print multi-column 'contractor' bills as well!



## Scaleable – link other leading solutions for faster measurement

For quicker taking-off options and to enhance the standard dimsheets routines you can of course enhance the system with one or more of our leading edge on-screen measurement systems. For all 2D works, including lengths, areas and enumerated count points from drawings, plans, scans and photographs there's our OnSight™ system (it does 3D and basic volumetrics too) and for cut & fill there's nothing better than EasyEarthworks™.

Both systems can inject answers to QSExpress™ and power users can invoke the dynamic linking function for instant BQ changes as the take-off is changed and updated. It really is power at your fingertips.

## Help when it's needed

As with all Visual Precision systems, full on-line Help is available throughout the program in fully narrated multimedia format. Simply by clicking the Help menu you can dive into the on-screen 'show me' sound and video type presentation to guide you through your chosen topic.

Vastly quicker than flat file manuals and traditional Help system, our on-screen video

based tutorials deliver the knowledge required in a fraction of the time other methods take and 'take-up' by the user is fast and efficient. It's another of the systems big secrets.

## Training & support

With all this technology our clients also like us to provide training and after sales support. Our web based training packages ensure you, the user, get the very best from the system right from day one and in the minimum of time.

Training is structured specifically for each group and is delivered at a pace to ensure thorough understanding of the system. Coupled with the multimedia based Help system, users are generally up and running within just a few hours.

We also provide the very best back-up service to keep you running smoothly towards your goals and our system upgrades are effortless and smooth, ensuring you're up-to-date all the time.

To learn more about the system, call now and ask about our one-to-one webinar presentations. There's nothing to lose and a lot to gain.



*"QSExpress™ - it's the smart choice for buyers with intelligence, they're careful to search out and invest in products that always give them an edge".*

## AT A GLANCE

### ■ OPERATING SYSTEMS

Windows XP - Windows 11

### ■ ARCHITECTURE

QSExpress™ is developed in Microsoft languages throughout

### ■ VERSIONS

Stand alone single user and SQL based real-time network multi-user versions available with remote worker (on-line and off-line) options

### ■ LIBRARIES

Standard Method Libraries available. User created libraries as standard. Legacy libraries can be imported as a service

### ■ TAKING-OFF

QSExpress™ comes complete with a fully integrated dimsheets system – the industry champion

### ■ CAD/PDF/IMAGE/SCAN FILE MEASURE

EasyEarthworks™ and OnSight™ offer seamless measurement options to QSExpress™ handling both paper and electronic drawing information

### ■ OUTPUT

Print take-off, abstracts and BQ's. Export Bills to Excel™ and CITE formats

### ■ TRAINING

On and off-site training in the package Multimedia based tutorials and Help system for rapid take-up

### ■ AFTER SALE

Automatic upgrades  
Web support  
Telephone support  
On-going development

### System requirements:

Windows XP or later. See website for current hardware specification ([www.visualprecision.co.uk](http://www.visualprecision.co.uk))

QSToolbox, QSExpress, EasyEarthworks, OnSight and AutoCheck are registered trade marks or trade marks of Visual Precision Limited.

Microsoft and Excel™ are registered trademarks and trademarks of Microsoft Inc.

© Visual Precision Limited 2023. All rights reserved

E&OE Specifications may change without notice.

## Visual Precision

Visual Precision Limited  
2 Sycamore Tree, Elmhurst Business Park  
Park Lane, Elmhurst, Staffordshire WS13 8EX  
T: +44 (0)1543 262222 F: (no longer in use)  
E: [sales@visualprecision.co.uk](mailto:sales@visualprecision.co.uk)  
W: <http://www.visualprecision.co.uk>

Your QSExpress™ reseller: